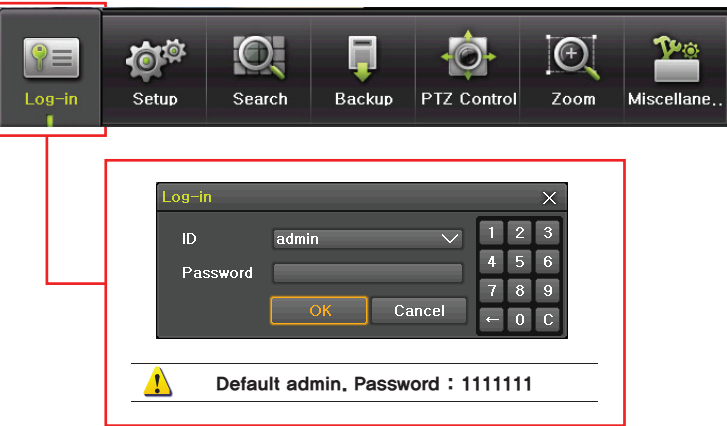


Quick Setup Guide

1. System Login

1.1.User Login



1.2. Time Setting and HDD Format



Go to the menu of [{Menu} → {Setup} → {Time}] and make a proper time/date setting based on your time zone.

User has to format new HDD before use. Go to the menu of [{Menu} → {Setup} → {Storage}] and select the HDD for Recording-Init.

1.3.Setup

Setup is to help user for easy configuration for recording resolution, recording speed, recording mode and recording quality.

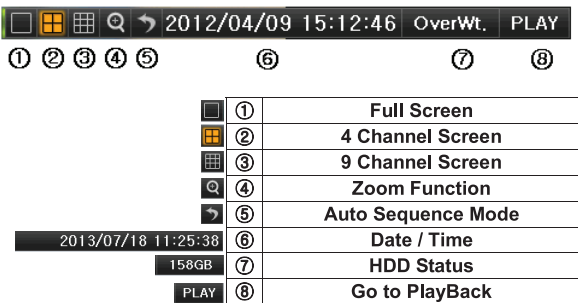
Select [{Menu} → {Setup} → {Recording} → {Recording}].

For further details, please refer to the User Manual on CD provided with DVR together.

System Operation

2. System Operation

2.1. Using Tool(Control) Bar



2.2. Display Mode

User can select display mode by using tool bar or pop-up menu. The images can be seen on real-time speed by 1, 4, 6, 9 split screen.

※ Recording Event / Recording Mode Icon ※	
	Motion Detection
	Sensor Detection
	Audio Detection
	Text Detection
	Video Recording
	Audio Recording
	Text Recording
※ Live Screen Icon ※	
	Video is not connected.
	Audio is activated.
	Audio is not activated.
	Camera has been disconnected.

2.3. Using main Menu

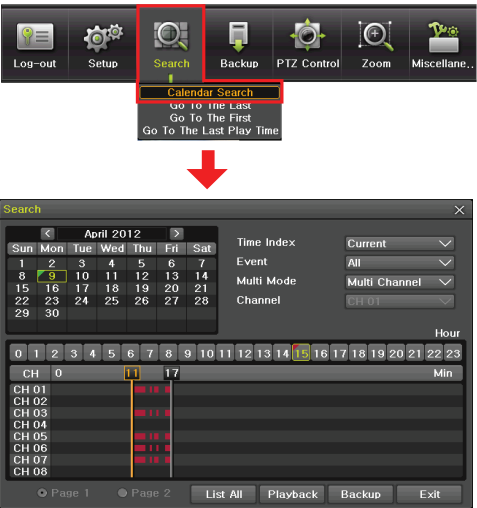
Menu window pops up by clicking the right button of the mouse or pressing [MENU] button on the front panel.

	Log-out
	Setup
	Search
	Backup
	PTZ Control
	Zoom
	Miscellaneous

	Select Time / Camera / Recording / Schedule / Storage / Network / System
	Search the recorded image
	Backup the recorded file
	Control PTZ
	Control Zoom
	DVR Info. / Log Viewer / Misc. Control / Display Setting / System Shutdown

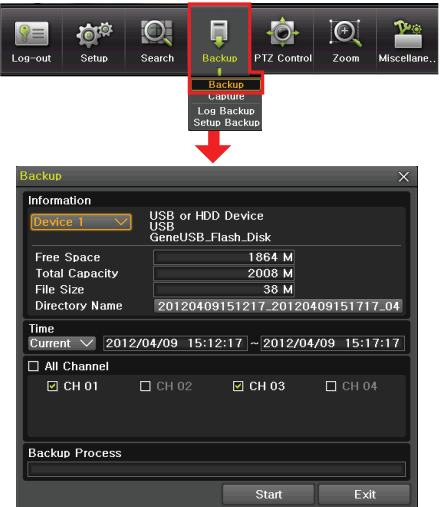
2.4.Search Mode

User can click the Search icon on the Menu Bar to search the recorded image by selecting date & time on the calendar.
User can click the Playback icon to playback.



2.5. Backup Mode

User can easily archive video image.
Click a Backup icon on the Menu Bar
Backup window will be shown, then, select the backup media such as CD/DVD or USB thumb drive and select time and channel to be recorded.
Execute archiving.



Network Setting

3. Network Setting

3.1.Public, Static IP

Go to the menu of [{Menu} → {Setup} → {Network} → {Ethernet}] and check TCP/IP and input IP Address, Subnet Mask, Default Gateway.
(IP address is assigned by ISP.)

3.2.Public, Dynamic IP without IP Router

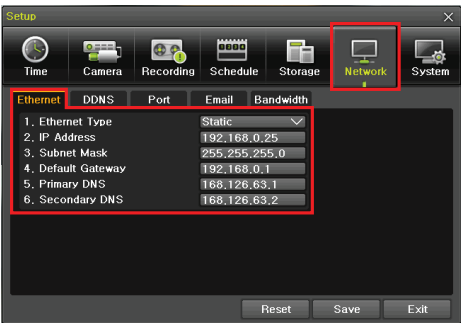
Go to the menu of [{Menu} → {Setup} → {Network} → {Ethernet}] and check DHCP.

Go to the menu of [{Menu} → {Setup} → {Network} → {DDNS}] and select DDNS On.

3.3.Public, Dynamic IP with IP Router

3.1.1 DVR IP Setting

Go to the menu of [{Menu} → {Setup} → {Network} → {Ethernet}] and check TCP/IP and input IP Address, Subnet Mask, Default Gateway
(Router IP address: 192.168.0.#, DVR IP address : 25)

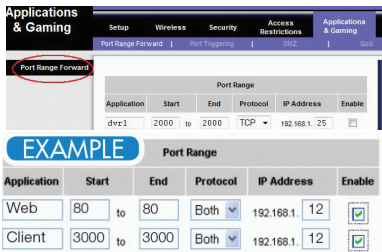


3.3.2 Router Setting

Input a router IP address (192.168.0.1) and go to the router setting.
There are 2 ways to set "port forwarding" up as below.

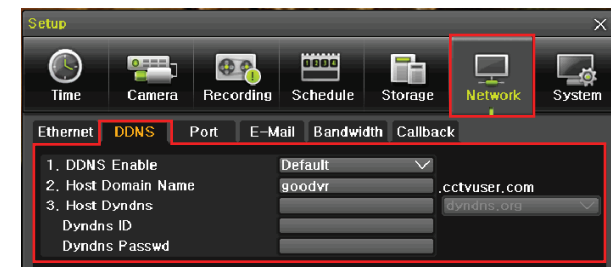
- 1) DMZ : Enable DMZ and input the DVR IP Address 192.168.0.25.
- 2) Port forwarding : Set up 2000.

All routers are different.
To port forward your router, please refer to your router's user manual.
Two examples of a port forwarding screen are shown for illustration purposes.



3.3.3 DDNS Setting

Go to the menu of [{Menu} → {Setup} → {Network} → {DDNS}] and select DDNS On and input Host Domain Name. (DDNS from IP router can also be applied.)



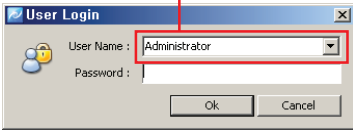
Ex) Domain Name : goodvr.cctvuser.com

4. VMS (Video Monitoring Software)

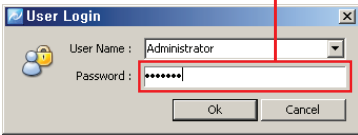
VMS(Video Monitoring Software)is a powerful centralized management solution that offers user full flexibility to control the entire system over the network, consists of 5 function module, System Monitoring, Remote Search & PB, Smart Search & Watermark detect, DVR Health Manager, System setup configuration

4.1. System Login

- 1) In the program start menu, go to VMS Menu and select VMS icon or double-click on VMS icon in the wallpaper, and then the login window pops up.
- 2) Select one of the names of registered users in the login window. For the first time login, select Administrator. Administrator is registered as a fundamental user.



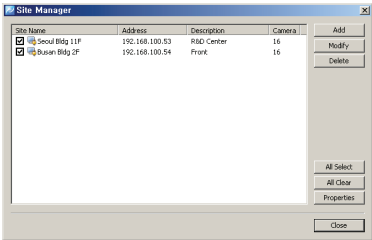
- 3) Enter a password. For the first time login, enter an administrator password. The administrator password "1111111". After login, change the administrator password.



- 4) The program starts if the password is right.

4.2.Site Registration

- 1) Select 'Setup'->'Site Manager' menu. Site Manager Setup window shows up.
- 2) In Site Manager, functions including site add, delete, modify, all select, all clear and properties are available.



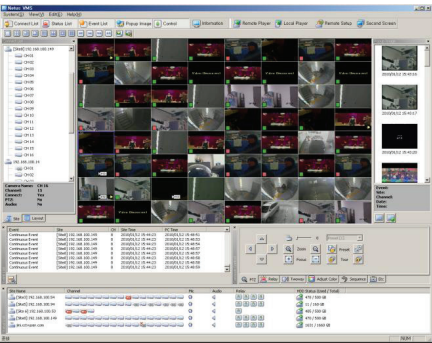
- 3) Click on 'Add' and enter a security device name, description, connect address and port.

Item	Description
Name	Name of the security device to be used in the program
Description	Description of the security device
Connect Address	Network address of the security device
Port	Network port no. of the security device
Camera Count	The number of cameras connected to the security device
User Name	User name registered in the security device
Password	Password registered in the security device

- 4) VMS program automatically starts a connection to ticked addresses in Site Manager after successful login.

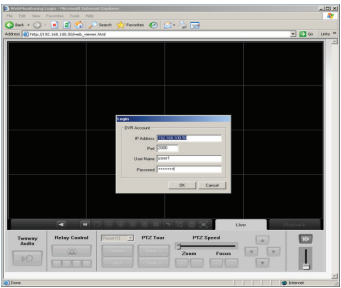
- 5) In Site Connection List, select a desired security device icon to be monitored.

- 6) Drag the icon into the viewer screen, and then all channel of the security device are displayed.



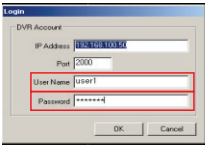
5. Web Viewer

The System is equipped with built-in web server. Thus user can be connected to the system by I/E web-browser for live monitoring, playback or remote setup configuration.



[Setting in IE Web browser]

- 1) Input IP address or Domain name
- 2) After downloading Active - X file. Log in dialog box will show up. Input Address, Port, User ID , Password.



Port :
User Name : admin
Password : 00000



[Live & Playback]

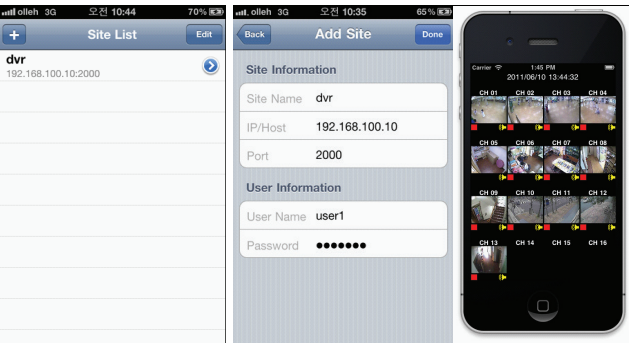
- 1) Click [Live] or [Playback] button in the bottom of the window
- 2) Double click the screen of channel or select [Channel mode].
- 3) Click [Trick mode] button in Playback

6. SmartEyes Pro (Mobile Viewer through Smartphone)

SmartEyes is the mobile viewer software that allows an user to view video image from the DVR on their smartphone. By installing the corresponding SmartEyes software on the smartphone, users can view 16 channel live video/audio, PTZ control, PTZ zoom in/out through WAP, Wi-Fi, etc.

6.1 SmartEyes Pro (Apple, Android), SmartEyesHD Pro (iPad)

Smartphone software for iPhone and Android is registered at the Apple "App Store" and Google "Play Store", hence users can download the software at the respective application stores.



Refer to the [User Manual] for full functional explanation of Front Panel, Rear Panel and IR Remote Controller.

Spec and functions are subject to change without notice. Some functions may not be available depending on models.