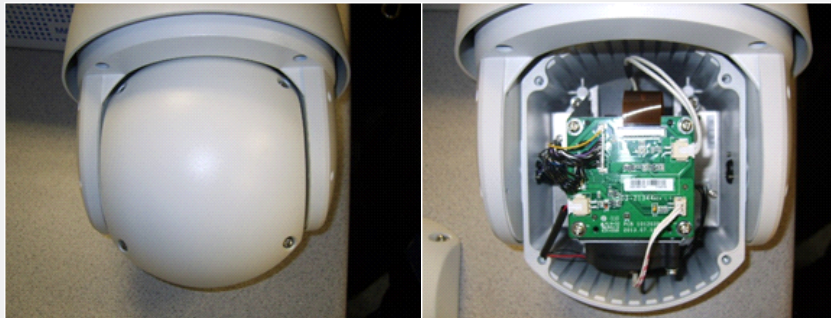


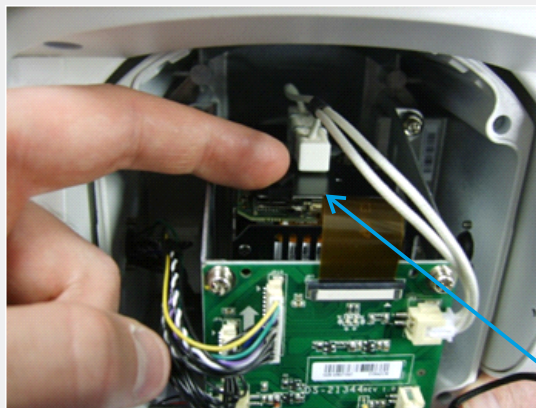
HIKVISION DS-2DF7186-A AND DS-2DF7286-A SD MEMORY CARD SLOT LOCATION

The below images show the location of the SD memory card slot for the Hikvision DS-2DE7186-A IP PTZ camera.

Loosen the four screws on the rear of the camera module and remove the back plate to reveal the internal electronics as shown below:



The Micro SD memory slot is located on the top of the camera module to the left of the ribbon cable as shown below:

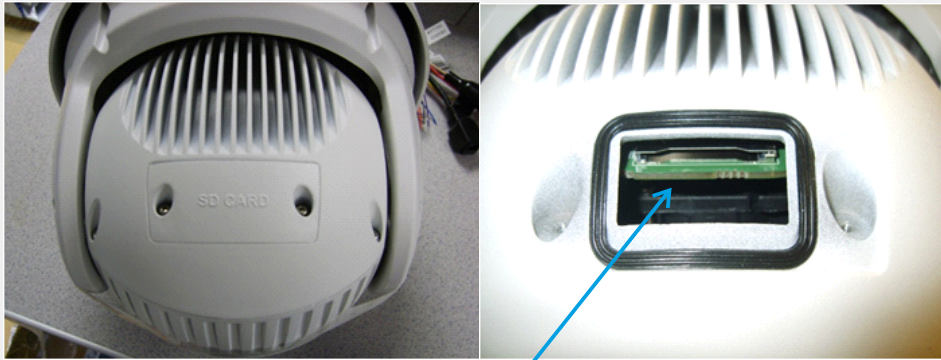


Micro SD Card slot

HIKVISION DS-2DF7186-A AND DS-2DF7286-A SD MEMORY CARD SLOT LOCATION

The below images show the location of the SD memory card slot for the Hikvision DS-2DF7286-A IP PTZ camera.

Loosen the four screws on the rear of the camera module and remove the back plate to reveal the internal electronics as shown below:



SD Card slot