

<b>Title:</b>	Vehicle Arming Function Configuration Guide	<b>Version:</b>	v1.0	<b>Date:</b>	05/11/2020
<b>Product:</b>	DS-2DFxxxxIXS(T2), DS-2DFxxxxIHS(T2) devices above V5.5.40 version			<b>Page:</b>	1 of 11

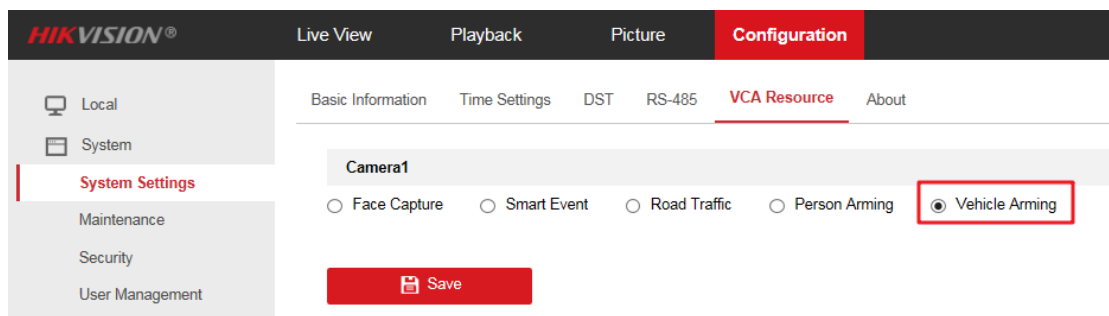
## Vehicle Arming Function Configuration Guide

Vehicle Arming is to detect and track designated license plates, and upload real-time target location and other related information.

There are 3 arming modes: Manual Vehicle Arming、Device Auto Arming and Platform Arming.

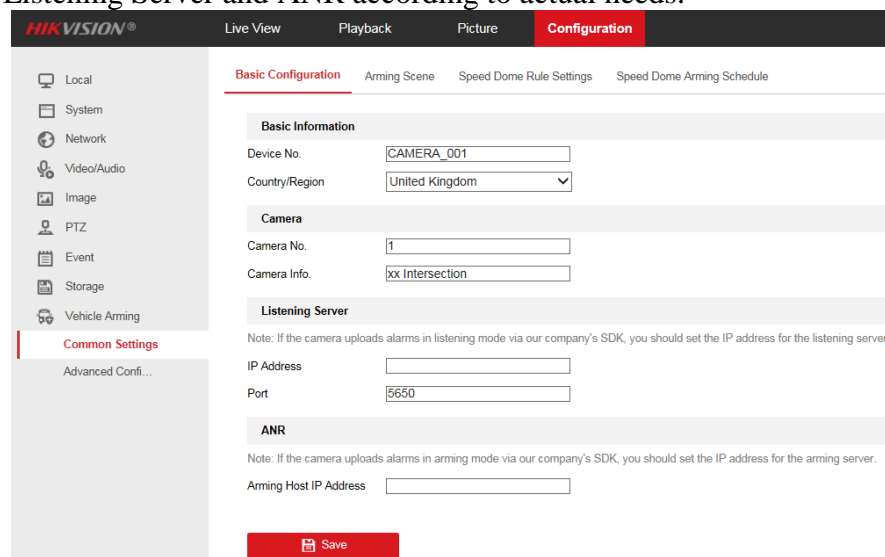
### 1. Select VCA Resource.

It is necessary to select the VCA resource as Vehicle Arming. Save and restart the device to enable the function.



### 2. Configurations For All Arming Modes.

- 1) Enter **【Configuration】** - **【Vehicle Arming】** - **【Common Settings】** - **【Basic Configuration】** tab, you can set the basic information for the camera, such as Device No., Country/Region, Camera No., Camera Info., Listening Server and ANR according to actual needs.



<b>Title:</b>	Vehicle Arming Function Configuration Guide	<b>Version:</b>	v1.0	<b>Date:</b>	05/11/2020
<b>Product:</b>	DS-2DFxxxxIXS(T2), DS-2DFxxxxIHS(T2) devices above V5.5.40 version			<b>Page:</b>	2 of 11

- 2) Enter **【Configuration】 - 【Advanced Configuration】 - 【Advanced】** page, you can set the advanced information for the camera according to your needs.

**Note:**

It is recommended to keep the default value.

**License Plate Thumbnail:** Check to upload license plate thumbnail.

**Tuning Mode:** The mode is only for professional users.

**Capture No Plate Vehicle:** Check to capture and upload vehicle without license plate.

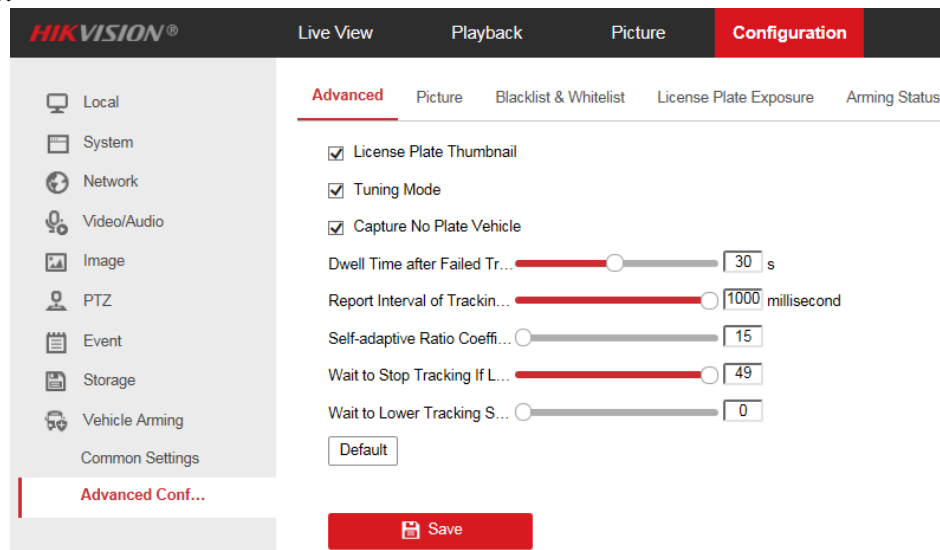
**Dwell Time after Failed Tracking:** The time the camera stays at the position where the target tracking fails.

**Report Interval of Tracking Info:** The alarming information upload interval during tracking.

**Self-adaptive Ratio Coefficient:** To control the zoomed-in level during tracking. Larger value means bigger zoomed-in level.

**Wait to Stop Tracking If Low Validity:** The validity is an internal parameter that helps judge whether the camera should keep tracking or not. This parameter is the waiting level before the camera returns when the validity is low. Larger value means longer waiting time.

**Wait to Lower Tracking Speed If Low Validity:** The validity is an internal parameter that helps judge whether the camera should lower the tracking speed or not. This parameter is the waiting level before the camera lowers the tracking speed when the validity is low. Larger value means longer waiting time.



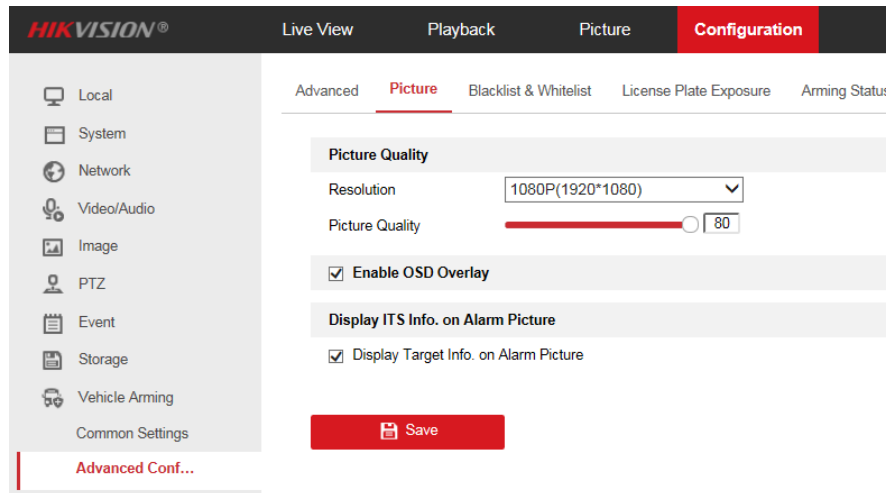
- 3) Enter **【Configuration】 - 【Advanced Configuration】 - 【Picture】** page, you can set the picture information here according to the actual needs.

**Picture Quality:** Set the resolution and the picture quality for originally captured pictures.

**Enable OSD Overlay:** The device OSD is overlaid on alarm picture.

**Display Target Info. on Alarm Picture:** Check to display target information on alarm pictures.

<b>Title:</b>	Vehicle Arming Function Configuration Guide	<b>Version:</b>	v1.0	<b>Date:</b>	05/11/2020
<b>Product:</b>	DS-2DFxxxxIXS(T2), DS-2DFxxxxIHS(T2) devices above V5.5.40 version			<b>Page:</b>	3 of 11



4) Enter **【Configuration】 - 【Advanced Configuration】 - 【License Plate Exposure】** page, it helps to make sure the license plates are exposed properly during vehicle arming.

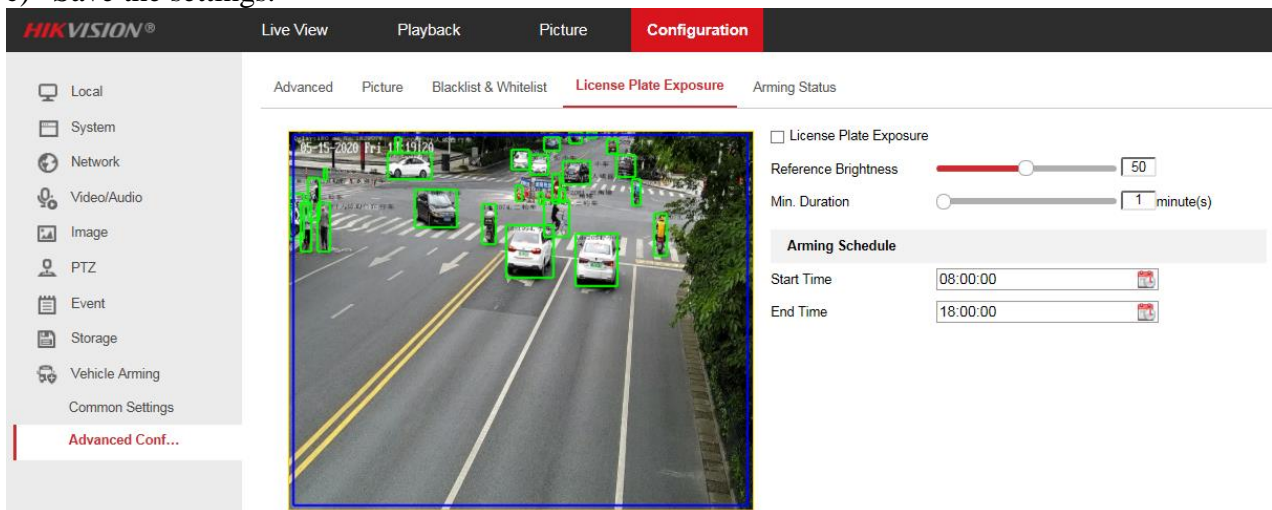
- a) Check Licence Plate Exposure.
- b) Set exposure parameters.

**Reference Brightness:** Adjust to value that license plate is exposed properly.

**Min. Duration:** The minimum duration to maintain the exposure level for the license plates when they are detected.

**Arming Schedule:** Set the start time and end time for the license plate exposure.

- c) Save the settings.

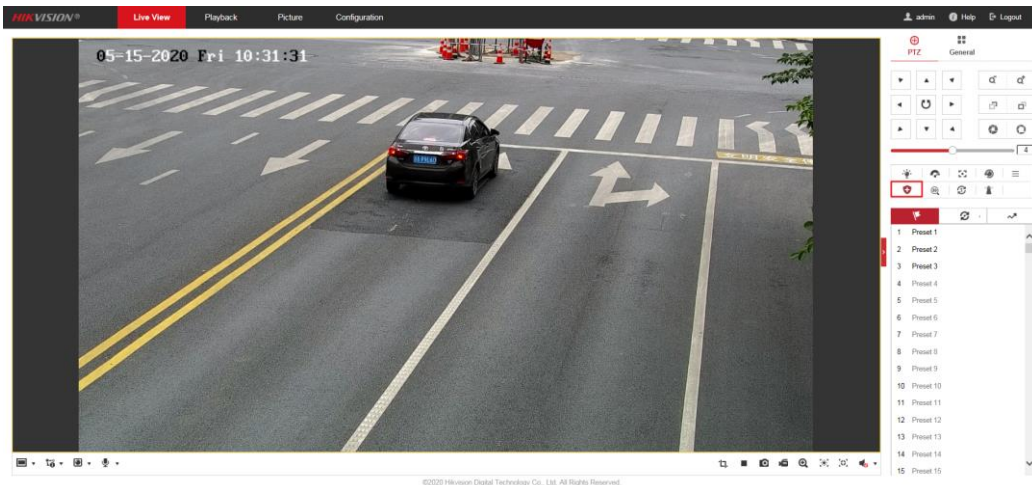


### 3. Manual Vehicle Arming Configuration.

The device tracks the user manually selected target and uploaded related information.

- 1) Log in the camera web browser and enter Live View page, click  to start/stop manual vehicle arming.

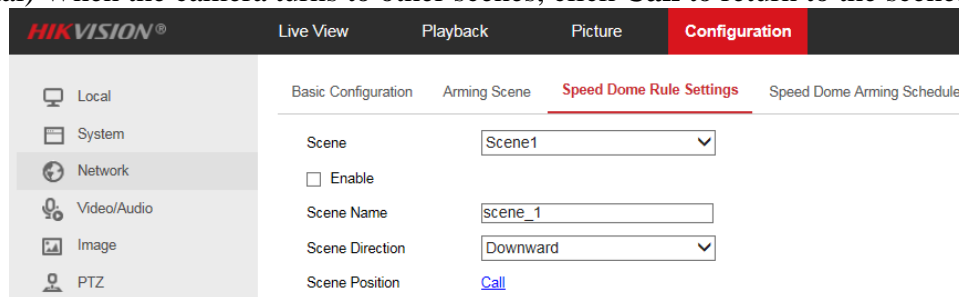
<b>Title:</b>	Vehicle Arming Function Configuration Guide	<b>Version:</b>	v1.0	<b>Date:</b>	05/11/2020
<b>Product:</b>	DS-2DFxxxxIXS(T2), DS-2DFxxxxIHS(T2) devices above V5.5.40 version			<b>Page:</b>	4 of 11



- 2) Select the target which you want to tracking and click on the target, the camera will track the target until it disappears.

#### 4. Device Auto Arming Configuration.

- 1) Click to enter the Speed Dome Rule Settings page, it is used as a part of Device Auto Arming. It supports multiple detection scenes and rule settings for each scene.
  - a) Select a Scene, and check **Enable**, adjust the live image to desired scene using PTZ control buttons.
  - b) Edit the **Scene Name** and **Scene Direction**.
  - c) (Optional) When the camera turns to other scenes, click **Call** to return to the scene.



- d) Click **Add** to add the desired number of lanes according to your need. Blue lane lines and trigger line appears on the image.
- e) Drag the endpoint of every lane lines to adjust the position.
- f) Drag the trigger line to adjust the position. Vehicle detection and capture is triggered when the vehicle hit the trigger line.



<b>Title:</b>	Vehicle Arming Function Configuration Guide	<b>Version:</b>	v1.0	<b>Date:</b>	05/11/2020
<b>Product:</b>	DS-2DFxxxxIXS(T2), DS-2DFxxxxIHS(T2) devices above V5.5.40 version			<b>Page:</b>	5 of 11

- g) Check **Enable** to enable the Vehicle Detection and check desired lane to enable arming.
- h) Save the Settings.

Vehicle Detection

Vehicle Detection

Enable

Arm Lane  Lane1  Lane2

- i) Repeat the steps to set other scenes.

- 2) Click to switch to Speed Dome Arming Schedule tab. The patrol schedule for the speed dome when it perform vehicle auto arming.

**Note:**

The scenes for the PTZ channel should be set in advance.

- a) Check Enable.
- b) Draw a time bar.
- c) Click on the blue time bar, and click **Configuration** to set patrol sequence and dwell time on each scene. To copy the setting of a day to other days, click and select desired days.

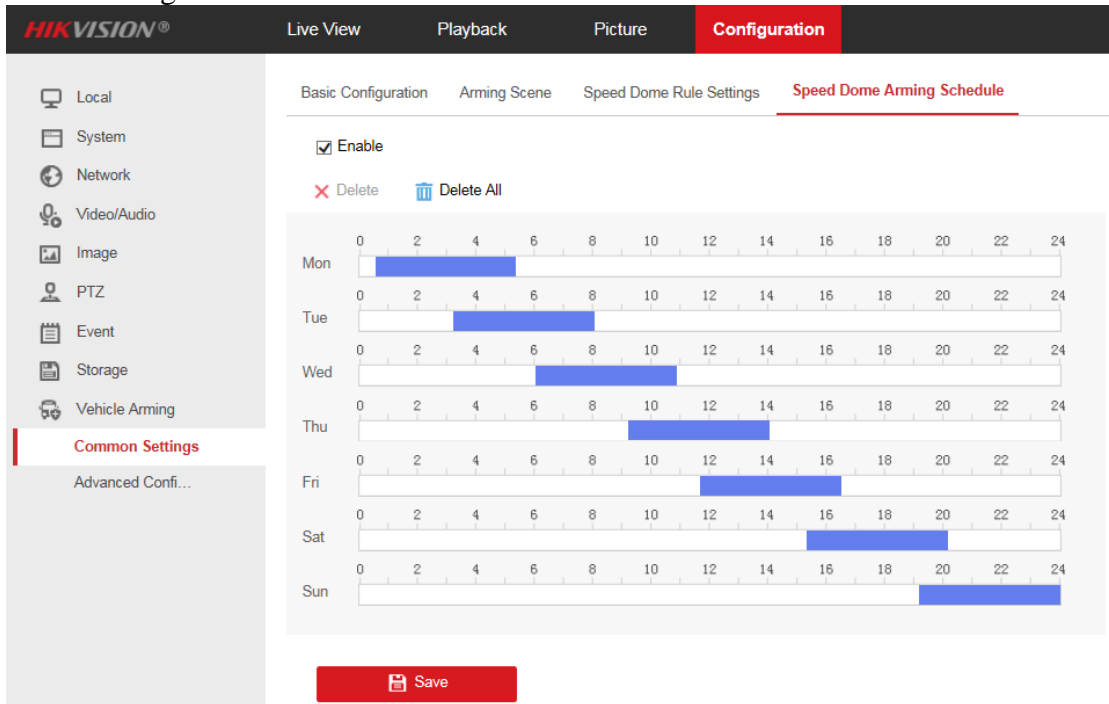
**Configuration** ✕

Mon 00:32:00 - 05:22:00 The total amount of the auto-switch dwell time should be no more than the arming time segment.

Patrol Sequence	Scene Name	Dwell Time
1	scene_1 <input type="button" value="v"/>	0 h 10 min 0 s
+		

<b>Title:</b>	Vehicle Arming Function Configuration Guide	<b>Version:</b>	v1.0	<b>Date:</b>	05/11/2020
<b>Product:</b>	DS-2DFxxxxIXS(T2), DS-2DFxxxxIHS(T2) devices above V5.5.40 version			<b>Page:</b>	6 of 11

d) Save the settings.



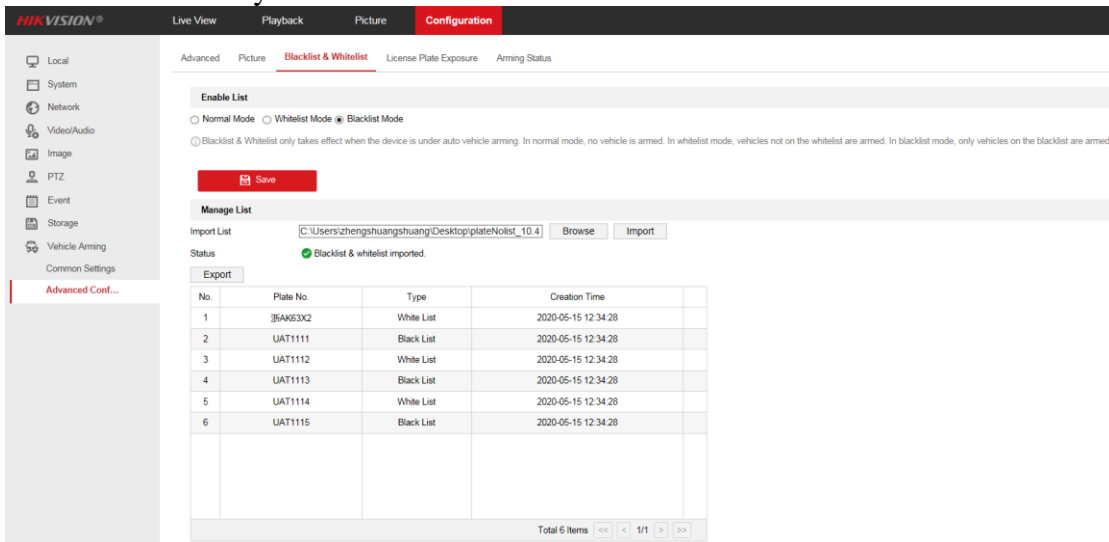
3) Click to switch to **【Advanced Configuration】 - 【Blacklist & Whitelist】** page, the plate list is for the device auto arming. You can choose to arm or not arm the vehicles on the list.

- a) Click **Export** to export license plate list template.
- b) Fill and import the list to the device.
- c) Select the list mode. 3 list modes are supported.

**Normal Mode:** No vehicle is armed.

**Whitelist Mode:** Vehicles not on the imported list are armed.

**Blacklist Mode:** Only the vehicles on the list are armed.



<b>Title:</b>	Vehicle Arming Function Configuration Guide	<b>Version:</b>	v1.0	<b>Date:</b>	05/11/2020
<b>Product:</b>	DS-2DFxxxxIXS(T2), DS-2DFxxxxIHS(T2) devices above V5.5.40 version			<b>Page:</b>	7 of 11

## 5. Platform Arming Configuration.

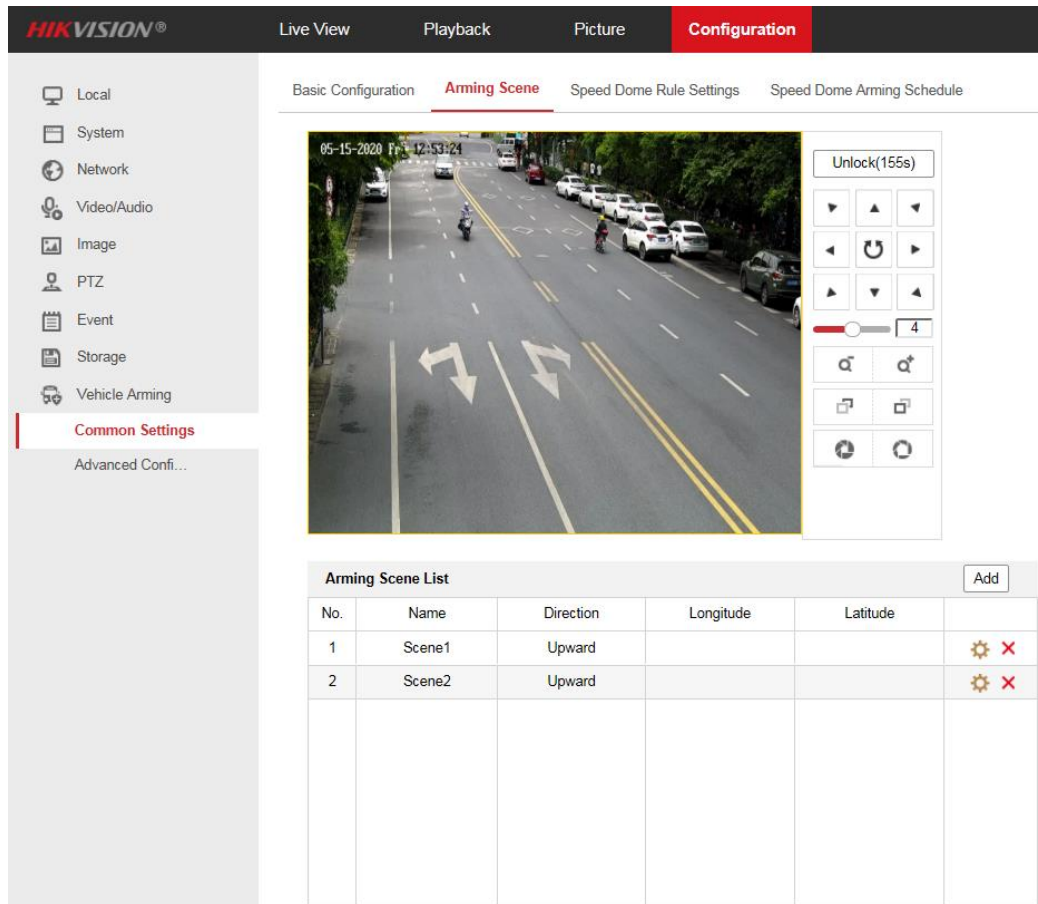
The device receives orders from the platform and performs arming tasks.

- 1) Click to enter the Arming Scene page. When the device receives an arming task, it turns to the configured arming location.

**Note:**

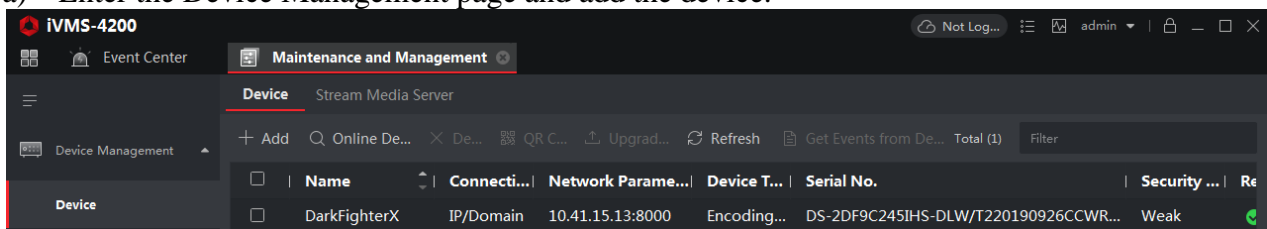
The arming scene settings is only used for the Platform Arming mode.

- a) Click Lock to prevent PTZ movement controlled by other users.
- b) Adjust the scene to the desired location using the PTZ control buttons.
- c) Click Add to save the location. The saved location is shown on the Arming Scene list.
- d) Edit the Name and Direction. Direction is the vehicle moving direction.
- e) Repeat to add other locations.



- 2) Vehicle Arming configuration on the iVMS-4200 Client.

- a) Enter the Device Management page and add the device.



<b>Title:</b>	Vehicle Arming Function Configuration Guide	<b>Version:</b>	v1.0	<b>Date:</b>	05/11/2020
<b>Product:</b>	DS-2DFxxxxIXS(T2), DS-2DFxxxxIHS(T2) devices above V5.5.40 version			<b>Page:</b>	8 of 11

b) Click to enter **【AI Dashboard】 - 【Arming and Tracking】** page, switch to Vehicle page, Arming, click configuration button in the upper right corner and click **Add Device** in the pop-up page.



c) Click License Plate tab, click **Add License Plate** and input the license plate which you want to arming.



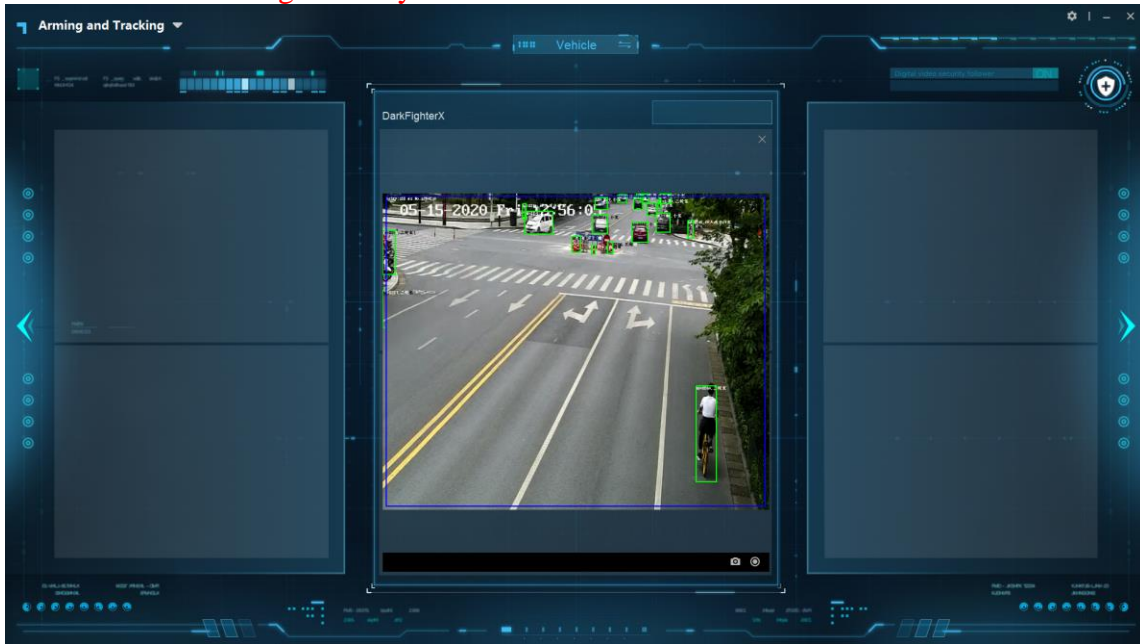


<b>Title:</b>	Vehicle Arming Function Configuration Guide	<b>Version:</b>	v1.0	<b>Date:</b>	05/11/2020
<b>Product:</b>	DS-2DFxxxxIXS(T2), DS-2DFxxxxIHS(T2) devices above V5.5.40 version			<b>Page:</b>	9 of 11

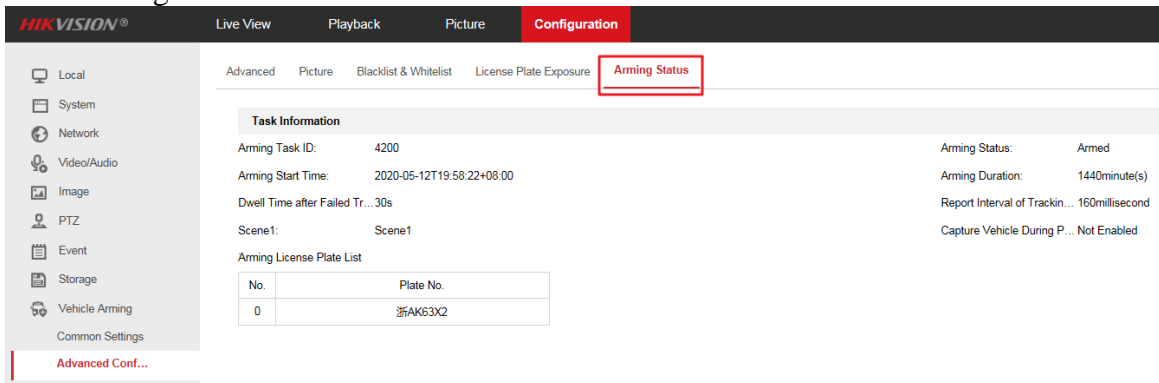
d) Click  in the upper right corner of the page to enable 4200 arming.

**Note:**

4200 uses scene 1 as the arming scene by default and it cannot be modified.

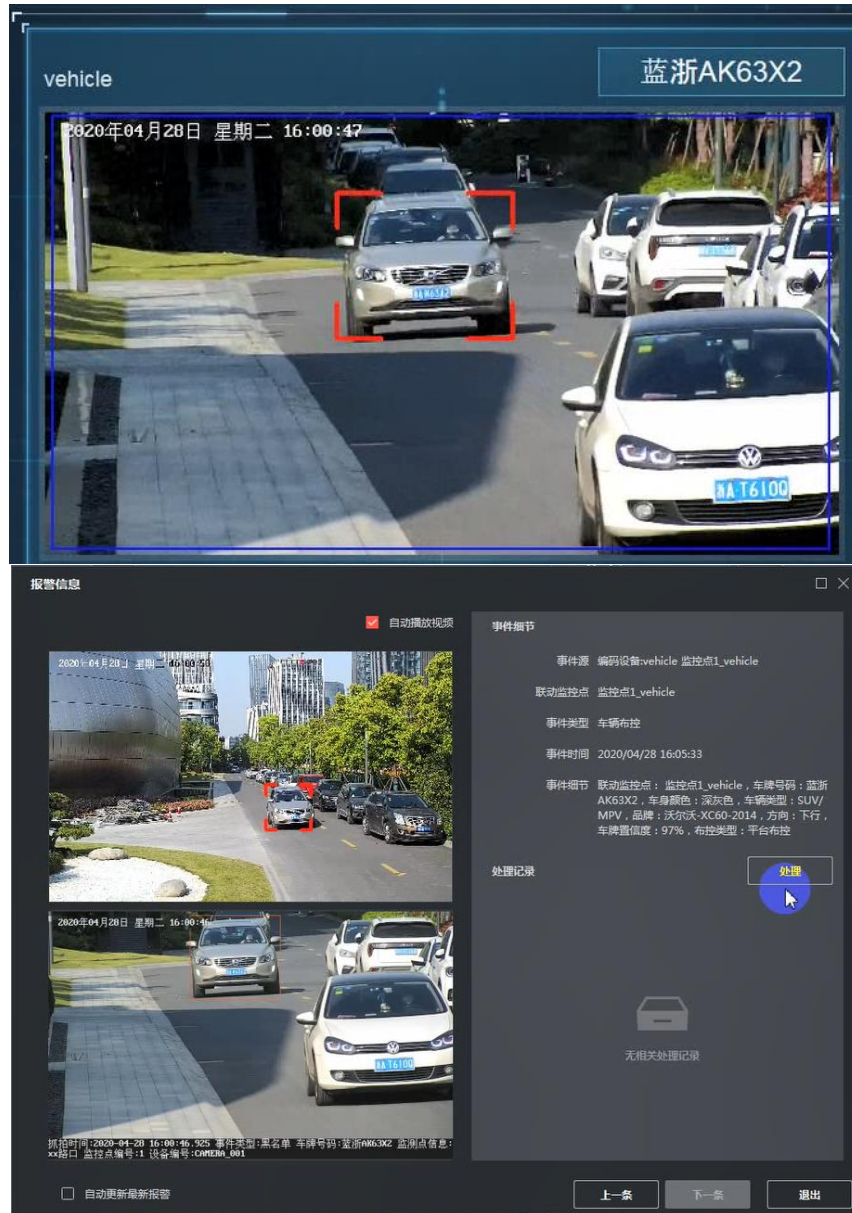



At this time, you can see on the web browser of the camera that the arming status is displayed as 4200 arming.

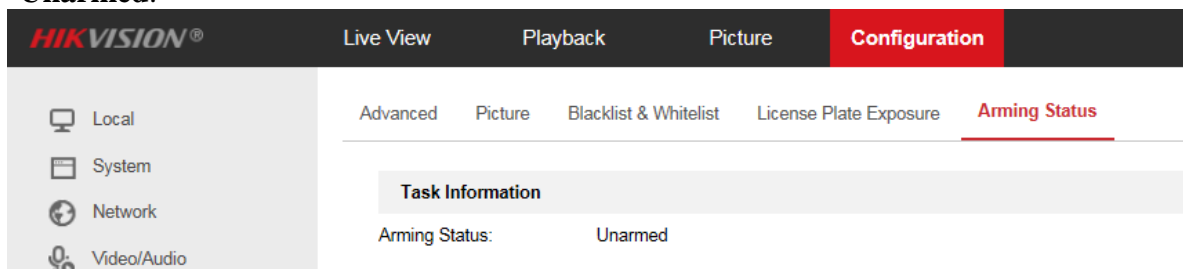


e) When the designated license plate is detected, the corresponding license plate number will pop up in the upper right corner of the view image. The iVMS-4200 client will also receive the vehicle arming alarm information.

<b>Title:</b>	Vehicle Arming Function Configuration Guide	<b>Version:</b>	v1.0	<b>Date:</b>	05/11/2020
<b>Product:</b>	DS-2DFxxxxIXS(T2), DS-2DFxxxxIHS(T2) devices above V5.5.40 version			<b>Page:</b>	10 of 11



- f) Click  in the upper right corner of the page to disable platform arming. At this time, you can see on the web browser of the camera that the arming status is displayed as **Unarmed**.





<b>Title:</b>	Vehicle Arming Function Configuration Guide	<b>Version:</b>	v1.0	<b>Date:</b>	05/11/2020
<b>Product:</b>	DS-2DFxxxxIXS(T2), DS-2DFxxxxIHS(T2) devices above V5.5.40 version			<b>Page:</b>	11 of 11

- 3) Vehicle Arming configuration on the HikCentral Platform.  
Coming soon.

**First Choice for Security Professionals**  
**HIKVISION Technical Support**