

How to Access NVR or DVR via IPv6

Preparation

Download iVMS-4200 and web browser, and install them on PC.

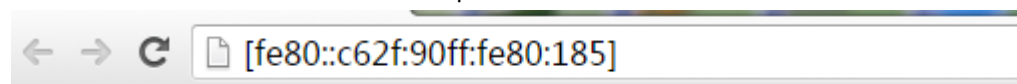
Note:

1. Access NVR/DVR by IPv6 is just available in the same network segment.
2. IPv6 address of NVR/DVR is inalterable.

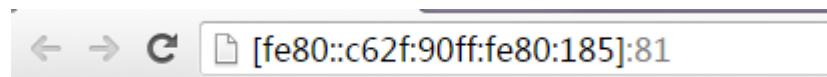
Access NVR or DVR via IPv6 on Web Browser

Steps:

1. Get the IPv6 address of NVR/DVR from local UI or SADP.
2. Enter the IPv6 address into the http address bar of web browser.



If the device's http port is not 80, you need add the port number like this:



3. Click on "Enter" button to access the device, and enter the User Name and Password to login.

[fe80::c62f:90ff:fe80:185]/doc/page/login.asp?_1458297579564

VISION

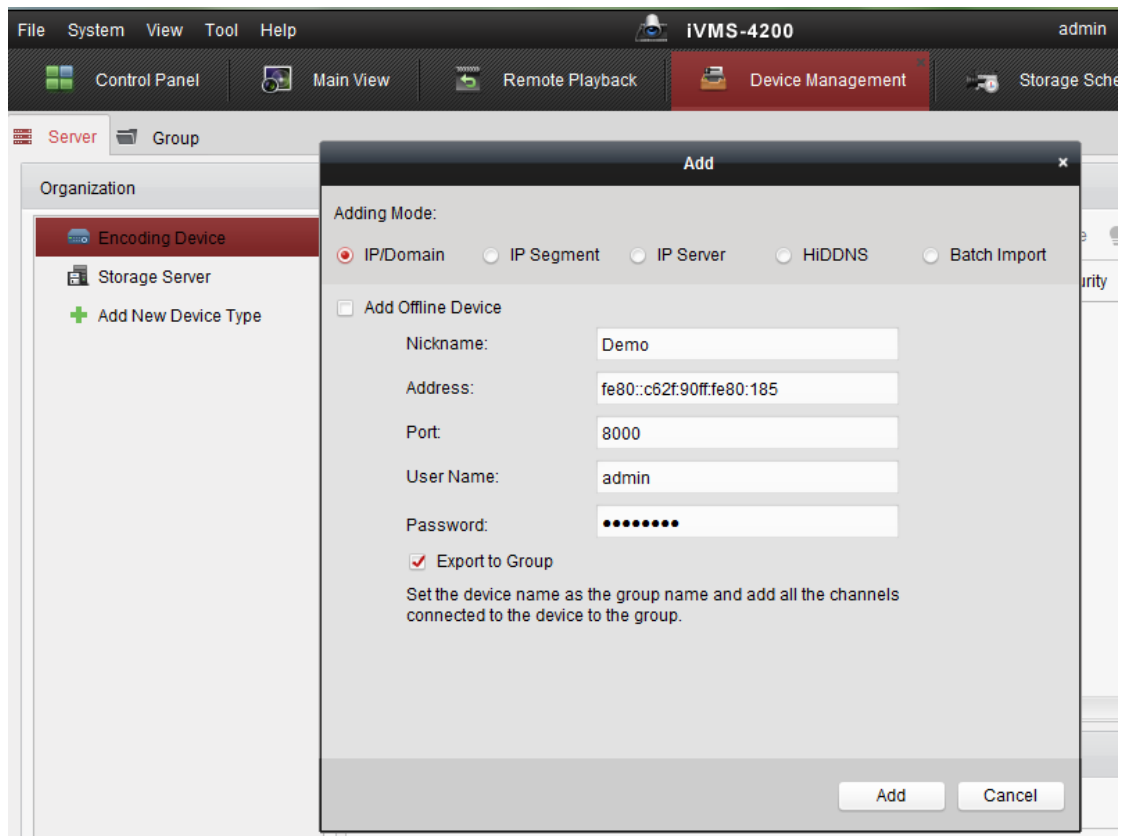


Access NVR or DVR via IPv6 on iVMS-4200

Steps:

1. Get the IPv6 address of NVR/DVR from local UI or SADP.
2. Launch iVMS-4200 and click on "Add device". Enter the IPv6 address, port, username and

password into the client.



3. Click on "Add" button to add the device.

Device for Management (1)						
+ Add Device ✎ Modify ✕ Delete ⚙ Remote Configuration 🗑 VCA Allocation 📄 QR Code 💡 Activate 🔄 Refresh All						
Nickname	IP	Device Serial No.	Security	Resource Usa...	HDD Status	
Demo	fe80::c62f:90ff:fe80:185	DS-9664N-ST1620151203BBRR522016467WCVU	Weak	🟢	🟢	

First Choice for Security Professionals

***HIKVISION* Technical Support**