

Seize the day ... or night

# "*pro*" professional solution

for 24-hour surveillance



**TV4X2812D**  
2.8-12mm F1.2

**TV7X7513D**  
7.5-50mm F1.3

**TV3X0310D**  
3.0-8.5mm F1.0

#### RELIABILITY?

Yes. We have over 20 years' experience in CCTV lens design and manufacturing.

#### MADE IN JAPAN?

Yes. We adhere strictly to Japanese technical practice and quality control standards.

#### ASPHERICAL?

Yes. Aspherical technology provides superior sensitivity and resolution.

#### IR CORRECTION?

Yes. Without the need to refocus, ED\* glass elements provide crisp colour images in daytime visible light and b/w images under night time IR light.

\*Extraordinary low dispersion



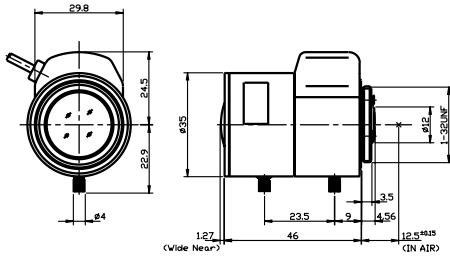
# SENKO **ADL**

"*pro*" series

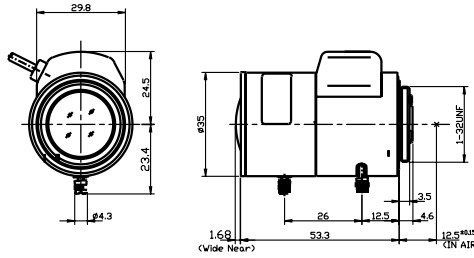
# "pro" series Day/Night varifocal lenses



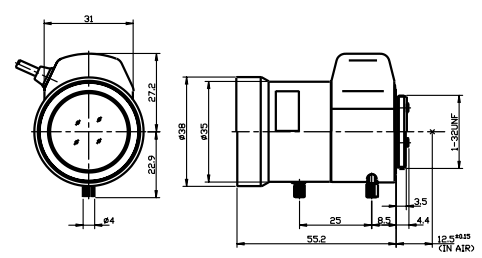
**TV3X0310D**  
3.0-8.5mm F1.0



**TV4X2812D**  
2.8-12mm F1.2



**TV7X7513D**  
7.5-50mm F1.3

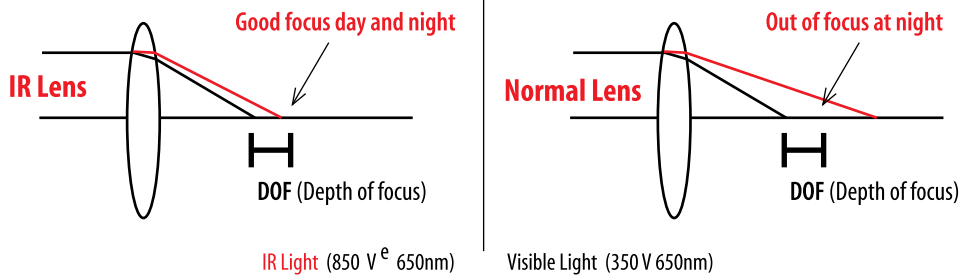


Model Number	TV3X0310D	TV4X2812D	TV7X7513D
Iris	DC Auto Iris	DC Auto Iris	DC Auto Iris
Format	1/3"		
Focal length	3.0-8.5mm	2.8-12mm	7.5-50mm
Iris operation range	F1.0-360	F1.2-360	F1.3-360
Field of view	1/3"	90.5° ~ 33.6°	98.5° ~ 23.8°
	1/4"	67.2° ~ 25.2°	73.0° ~ 17.8°
Focusing range	0.2m - ∞		0.4m - ∞
Operation	Iris	DC galvanometer	
	Focus	Manual(w/lock)	
	Zoom	Manual(w/lock)	
Dimensions	35x47.4x46mm	35x47.9x53.3mm	38x58.1x55.2mm
Weight	54g	58g	68g
Operation temperature	10~50 C°		



## How an IR lens works: mechanism and user benefits

Using a conventional lens under both daylight and infrared illumination will produce out-of-focus images at night since a regular lens cannot accommodate the IR focus shift. Senko's "pro" series lenses feature Extraordinary Dispersion (ED) glass which allow for the focus shift by transmitting supplementary light to the IR region. This makes refocusing unnecessary, so ensuring you get sharply-focused images under both white and infrared light.



www.senkoadl.com