

Title:	Elevator control wiring and Simple configuration (Button mode)	Version:	V2.0	Date:	12/5/2017
Product:	Access Control Device	Page:	1 of 10		



Elevator control wiring and simple configuration (Button mode)

Preparation :

Prepare the following equipment for the test, complete the test and then install
Ds-k2210 Ds-k2m0016 ds-k1106



Step 1: DIP Switch

The DIP switch of the card reader should be **decimal** 1 or 2.

The DIP switch of Ds-2100 should be **decimal** 1or 2.

The DIP switch of distributed elevator controller (DS-K2M0016A) is **decimal** 3-10

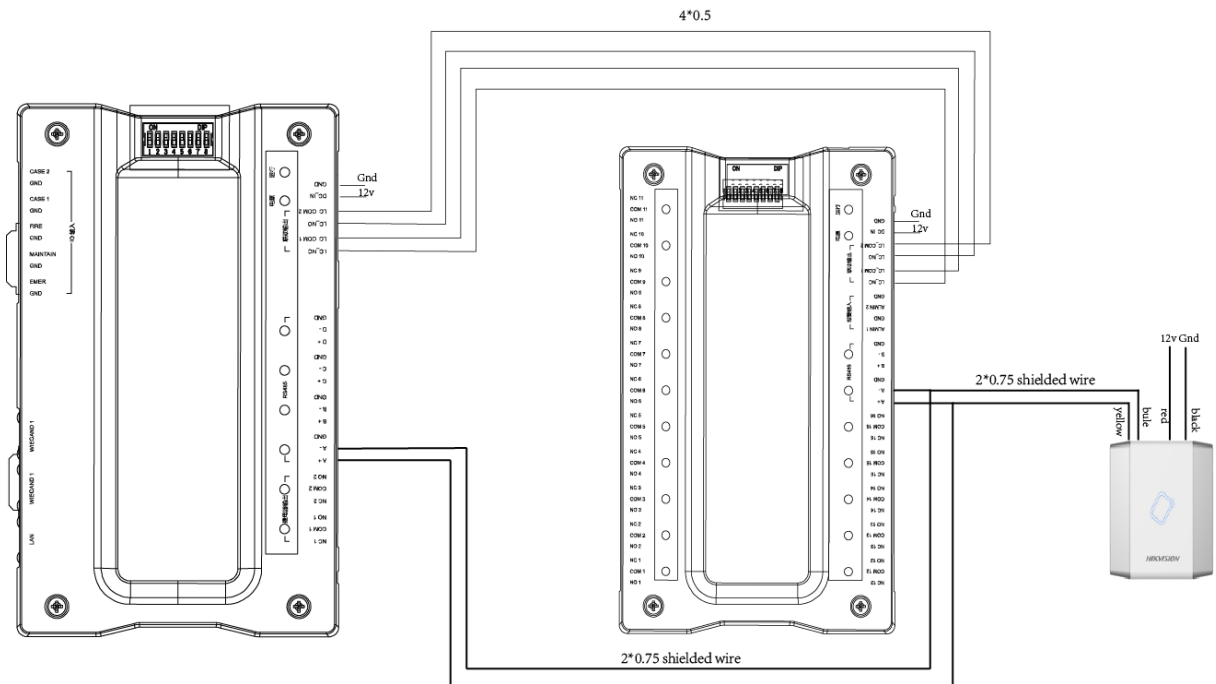
The device USES binary dialing codes

If you want to get dialing 3, Dial 1 and 2,if you want to get 4, Dial 3

Title:	Elevator control wiring and Simple configuration (Button mode)	Version:	V2.0	Date:	12/5/2017
Product:	Access Control Device	Page:	2 of 10		

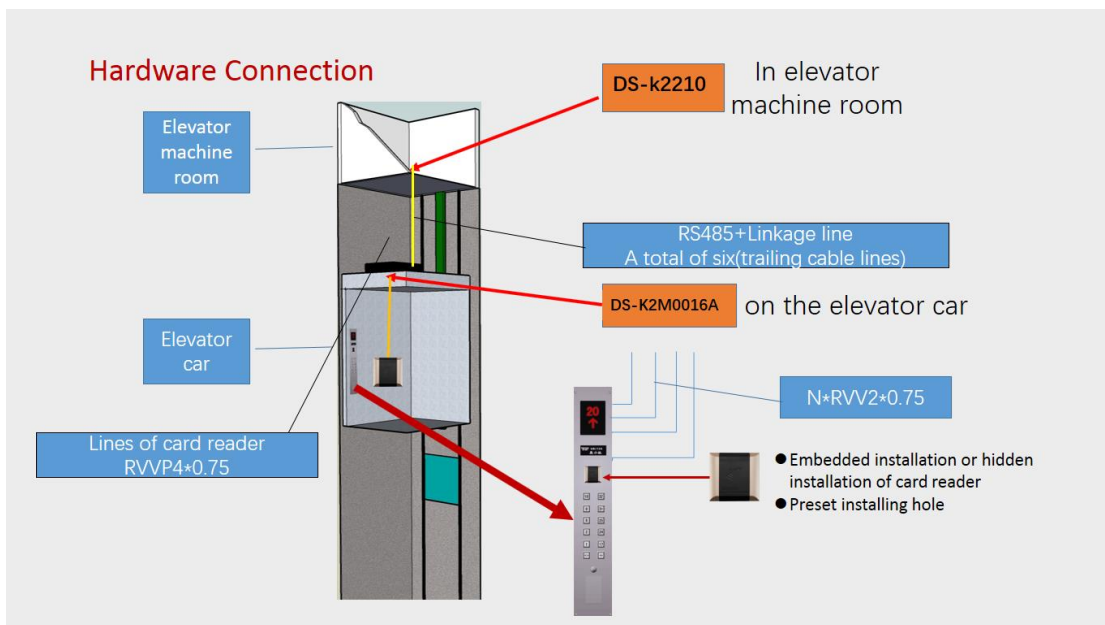


Step2:Wring



Step 3:Installation

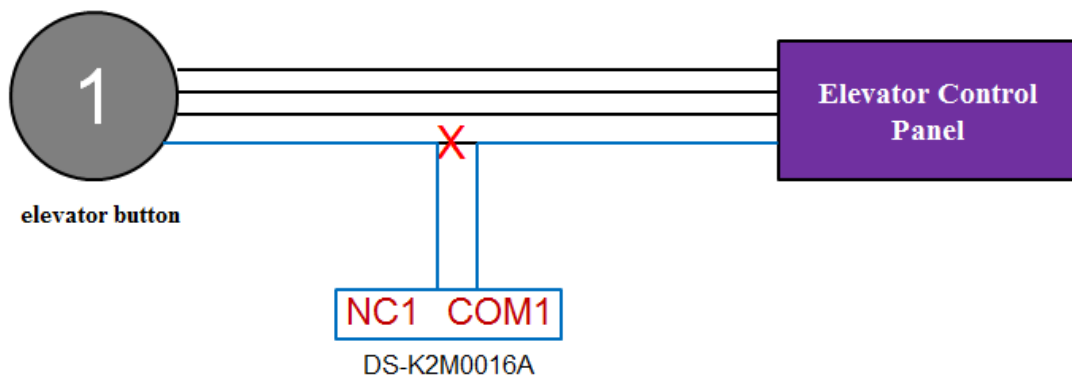
Installation of elevator controller and Elevator button connection
controller installation diagram



Title:	Elevator control wiring and Simple configuration (Button mode)	Version:	V2.0	Date:	12/5/2017
Product:	Access Control Device	Page:	3 of 10		

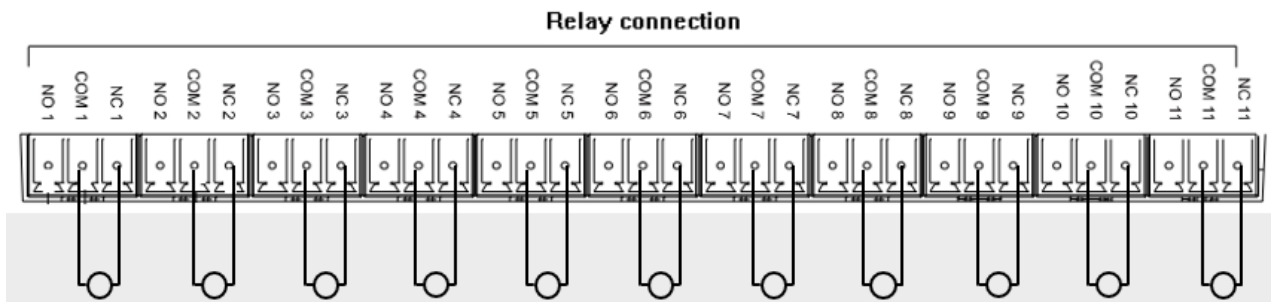
Principle:

Button (The DIP switch of distributed elevator controller (DS-K2M0016A) is decimal 3-10) : We control the buttons in the elevator, just put the NC and COM into the button circuit, if the permission is verifiable, the relay will action and you can press the corresponding button. This part we need use NC and COM, **because the NC and COM is disconnected when the controller with power supply, and it will be the opposite without power supply in button mode.** The advantage of this mechanism is the controller will release control without power supply, which can avoid hidden dangers.



After the authentication is passed, the relay closes and the button enables

Connect the relay string to the corresponding button



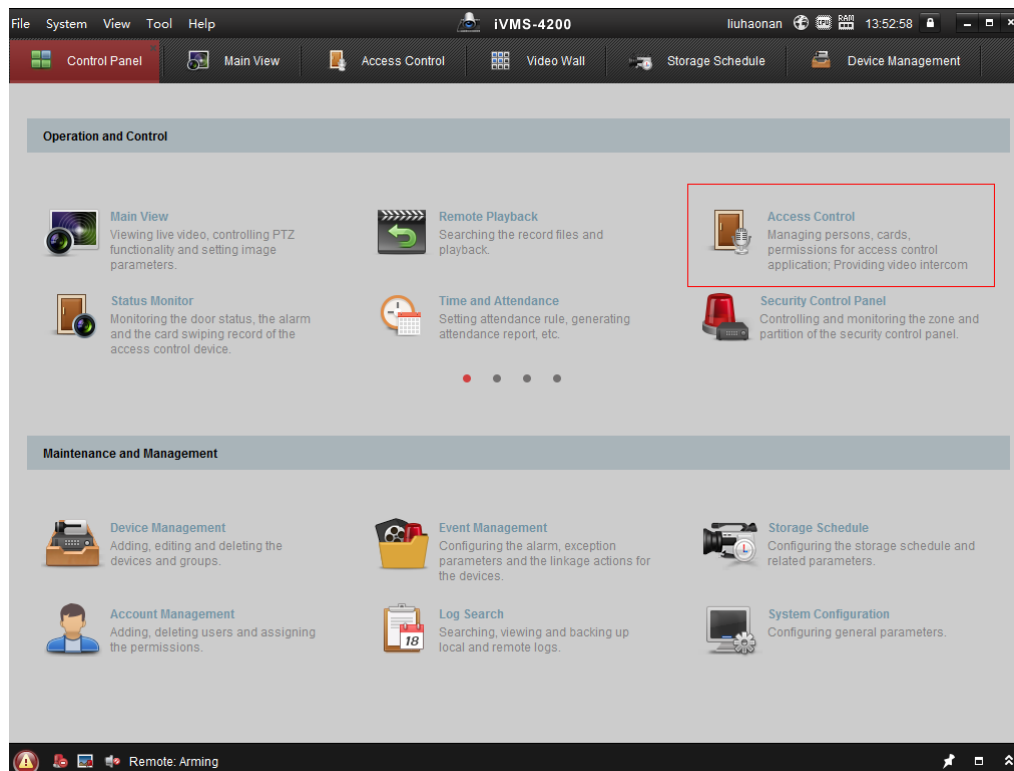
Title:	Elevator control wiring and Simple configuration (Button mode)	Version:	V2.0	Date:	12/5/2017
Product:	Access Control Device	Page:	4 of 10		



Step 3: Configuration

4200 2.6.2.7

1.4200 Configuration Click the access control



2. Activate

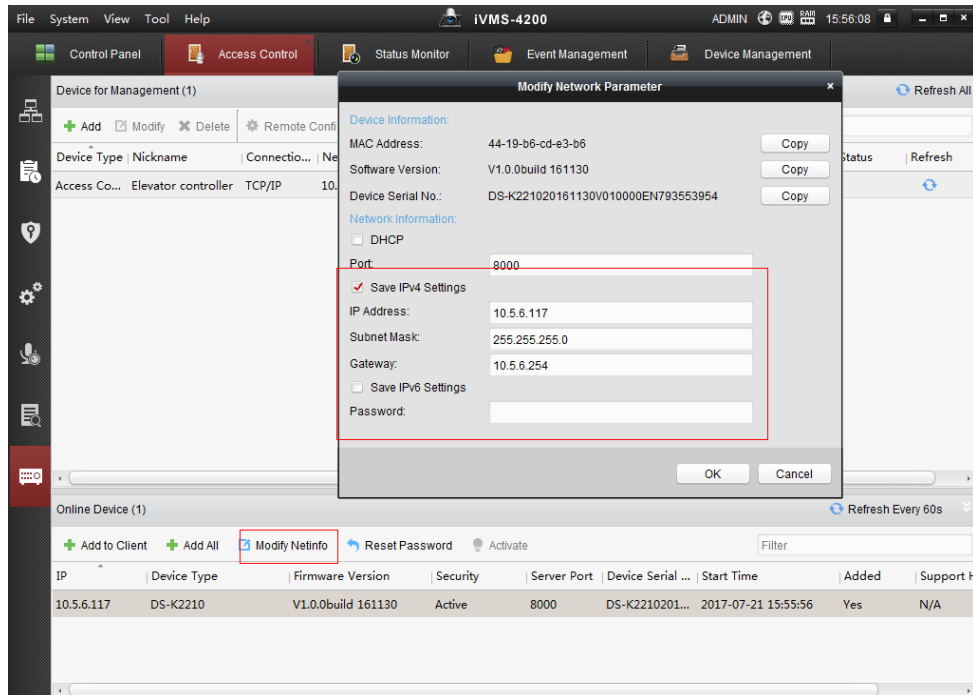
The screenshot shows a table titled 'Online Device (6)' with a 'Refresh Every 60s' button. The table has columns for IP, Device Type, Firmware Version, Security, Server Port, Device Serial, and Start Time. The 'Activate' button is highlighted with a red box. The table contains two rows of data:

IP	Device Type	Firmware Version	Security	Server Port	Device Serial ...	Start Ti
10.5.6.30	DS-7732NI-K4	HOLNVR32-IN V1.1.1.2...	Active	8000	DS-7732NI-K4...	2017-0
192.0.0.64	DS-K2210	V1.0.0build 161130	Inactive	8000	DS-K2210201...	2017-0

Title:	Elevator control wiring and Simple configuration (Button mode)	Version:	V2.0	Date:	12/5/2017
Product:	Access Control Device	Page:	5 of 10		

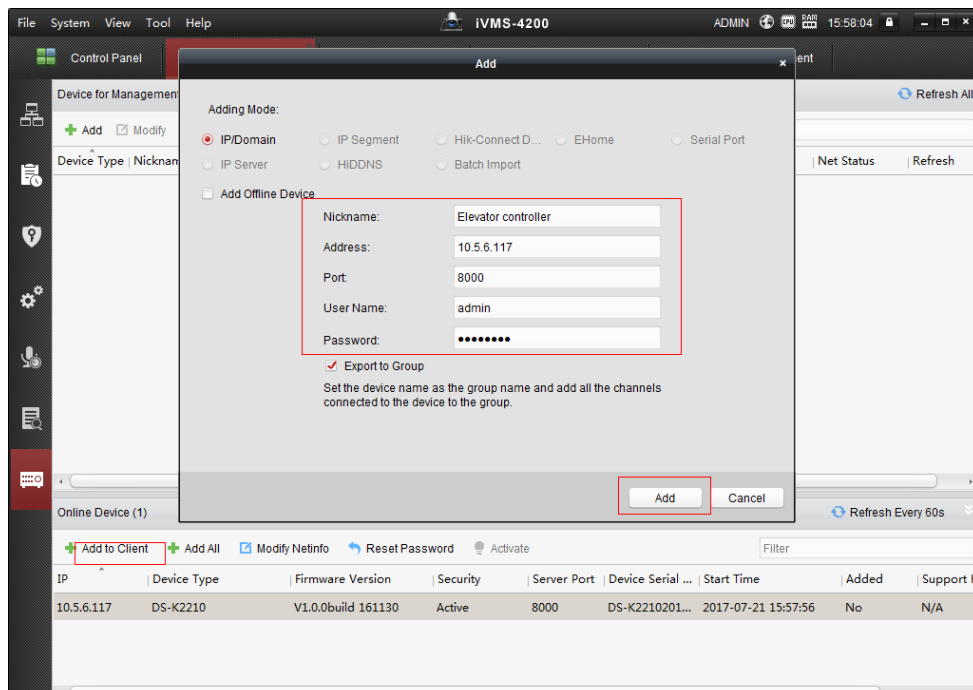


3. Modify net info



4. Add to client

User name : admin



To activate the password, you must check “Export to Group”

Title:	Elevator control wiring and Simple configuration (Button mode)	Version:	V2.0	Date:	12/5/2017
Product:	Access Control Device	Page:	6 of 10		



User Name:

Password:

Export to Group

5. Determine the controller to display online

Device Type	Nickname	Connectio...	Network Paramet...	Device Serial No.	Security	Net Status	Refresh
Access Co...	test	TCP/IP	10.5.0.233:8000	DS-K221020170511V010000EN793553954	Weak	+	

6. Configuring the correspondence between floor and relay

Drag the right relay to the corresponding floor

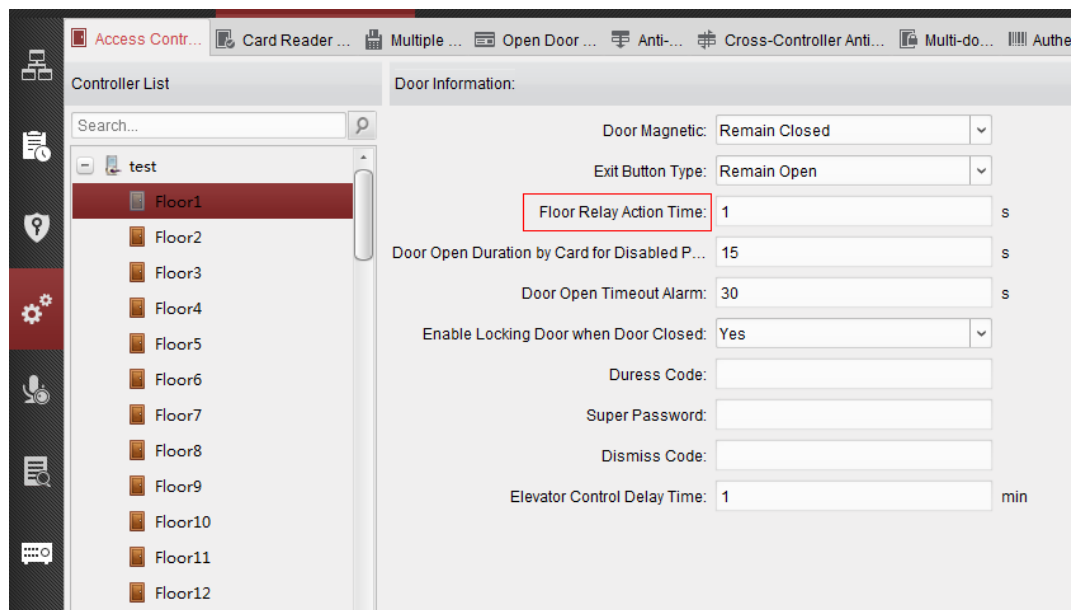
Click on the upper right corner after the configuration is completed.

The first number of the right relay is based on the Numerical Value of the dip switch

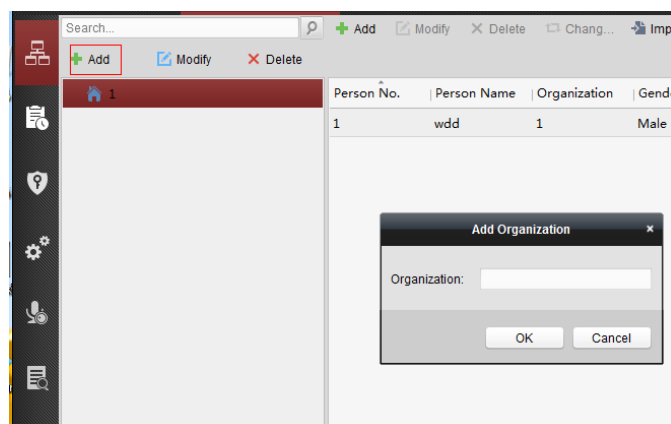
Title:	Elevator control wiring and Simple configuration (Button mode)	Version:	V2.0	Date:	12/5/2017
Product:	Access Control Device	Page:	7 of 10		



7. Set the delay time for each floor by default to 120s, which can be set to 15s

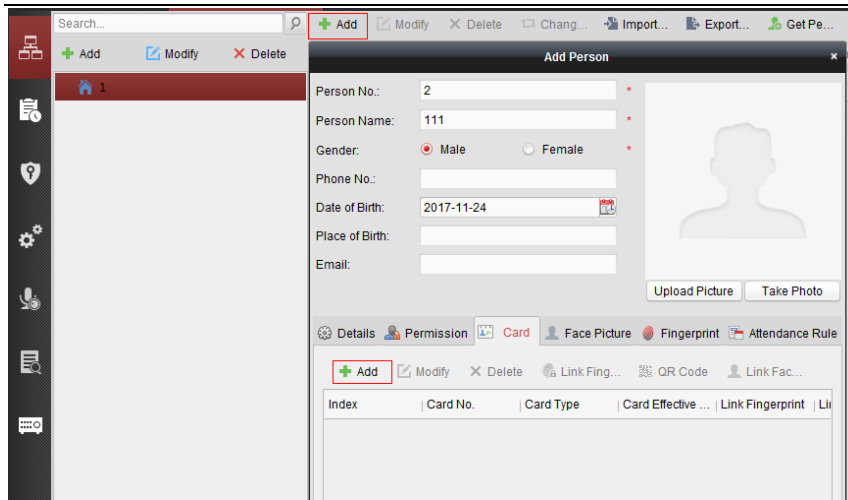


8. add the staff permission

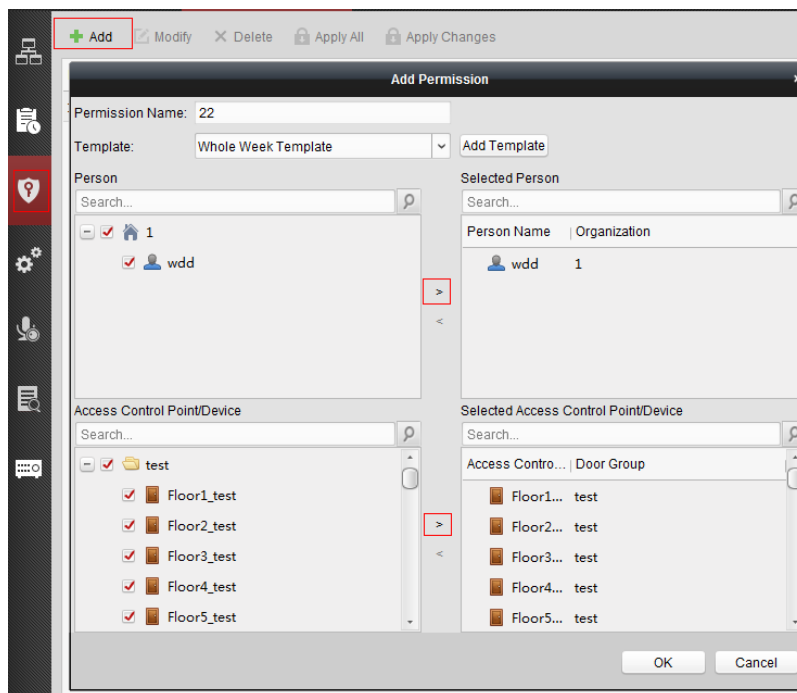


9. Add a person's card

Title:	Elevator control wiring and Simple configuration (Button mode)	Version:	V2.0	Date:	12/5/2017
Product:	Access Control Device	Page:	8 of 10		

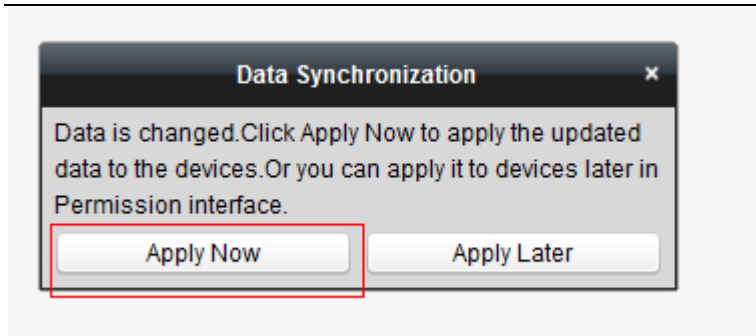


10. Add permissions, check permissions and click on the right direction to click ok



11. When you click ok, you will be prompted to send it, and you can click directly.

Title:	Elevator control wiring and Simple configuration (Button mode)	Version:	V2.0	Date:	12/5/2017
Product:	Access Control Device	Page:	9 of 10		



12. Can also be selected permissions set after clicking all issued (delete permission first, then issued all permissions, generally after adding new equipment use) or move issued (group permission to use when there is new change).

Step4 :Validate



I give this card the permission of the first three floors, after swiping card, We can see the corresponding relay acted by these pictures.

Title:	Elevator control wiring and Simple configuration (Button mode)	Version:	V2.0	Date:	12/5/2017
Product:	Access Control Device	Page:	10 of 10		



First Choice for Security Professionals

***HIK*VISION Technical Support**

Title:	Elevator control wiring and Simple configuration (Button mode)	Version:	V2.0	Date:	12/5/2017
Product:	Access Control Device	Page:	11 of 10		

